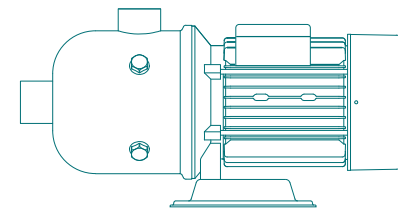


# PURCHASING HENGJIU USING FOREVER

**CHL/CHDF**

Horizontal Multistage Centrifugal Pump  
50Hz



 亨九水泵

**05** CHL2**06** CHL4**07** CHL8**08** CHL12**09** CHL16**10** CHL20**11** CHDF2**12** CHDF4**13** CHDF8**14** CHDF12**15** CHDF16**16** CHDF20



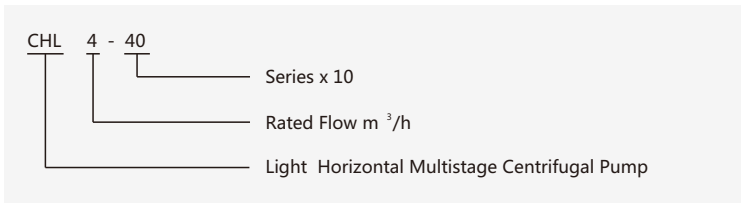
**1、PRODUCT OVERVIEW:**

CHL / CHDF series light horizontal stainless steel multistage centrifugal pump. Equipped with horizontal lengthened shaft motor, it sucks in axial direction and discharges in radial direction. The over-current components of the pump are all made of high-quality stainless steel plate by stamping and welding, with the characteristics of high efficiency, energy saving, reliable quality and so on.

**2、MOTOR:**

Horizontal multi-stage non-self-priming centrifugal pump with extended shaft motor.

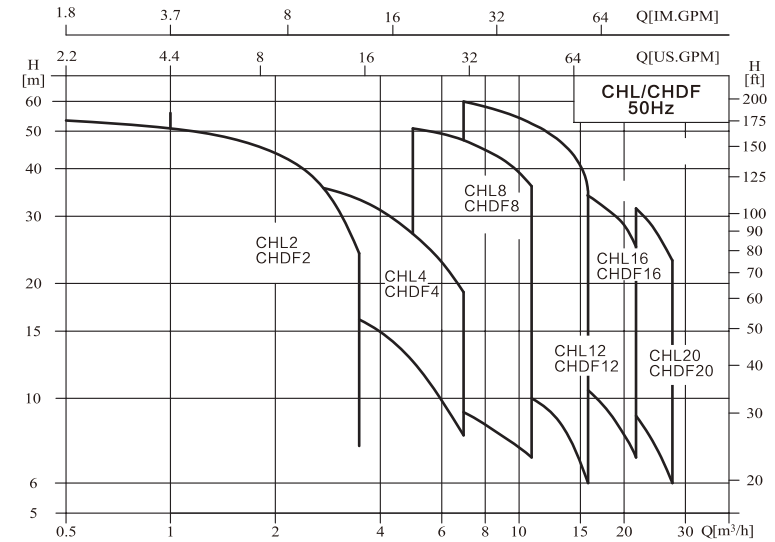
**3、MODEL MEANING:**



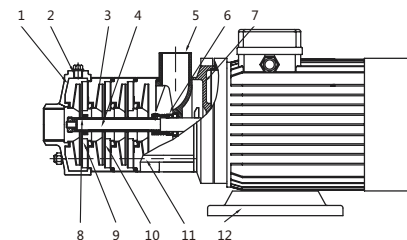
**4、OPERATING CONDITIONS:**

Liquid temperature: normal temperature - 15 C to + 70 C  
 Hot water type - 15 °C to + 110 C  
 Maximum ambient temperature: + 70 C  
 Maximum operating pressure: 10 bar  
 The maximum inlet pressure is limited by the maximum operating pressure

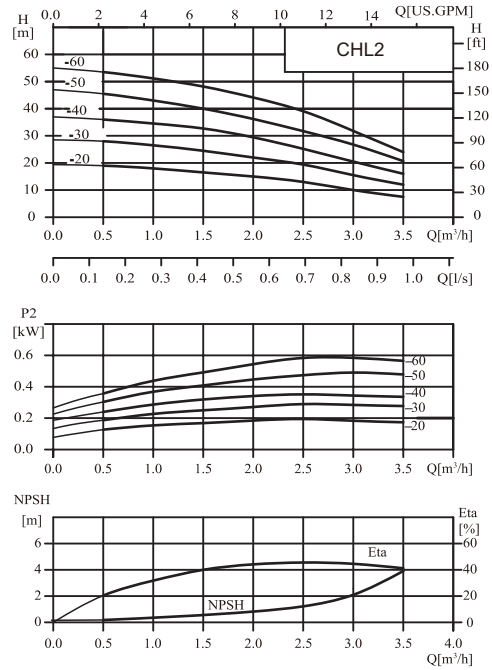
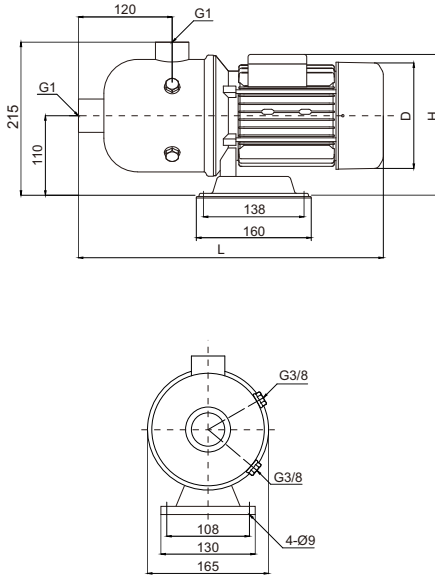
**5、PERFORMANCE CURVE:**



**6、CHART:**



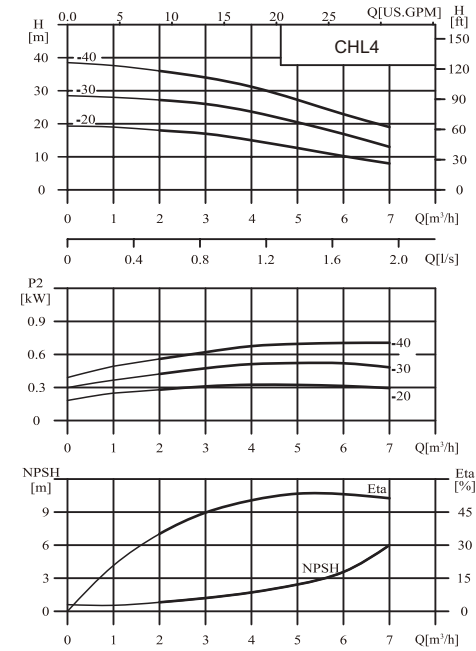
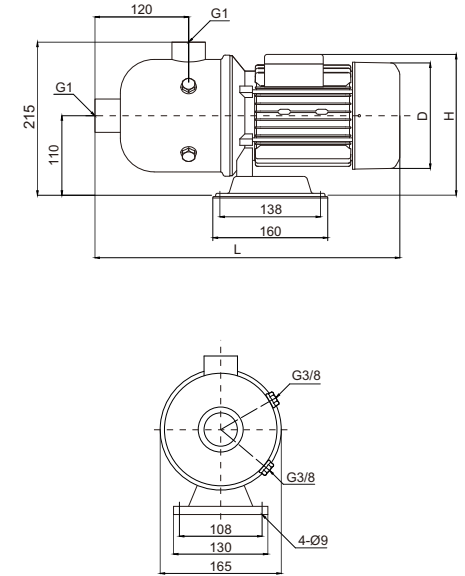
NUMBER	NAME	MATERIALS
1	Inlet Of The Water Section	Stainless Steel
2	Plug	Stainless Steel
3	Impeller	Stainless Steel
4	Axis	Stainless Steel
5	Out Of The Water Section	Stainless Steel
6	Mechanical Seal	
7	Motor End Cover	Aluminum Alloy/Cast Iron
8	Spacing Pipe	Stainless Steel
9	Support Guide Vanes	Stainless Steel
10	Guide Vanes	Stainless Steel
11	Pull Rod	Stainless Steel
12	Base	Steel

**PERFORMANCE CURVE**

**INSTALLATION DIMENSION DRAWING**

**SIZE AND WEIGHT**

MODEL	SIZE (mm)			WEIGHT (kg)
	L	D	H	
CHL2-20	400	145	215	13
CHL2-30	400	145	215	13
CHL2-40	400	145	215	13
CHL2-50	400	145	215	13
CHL2-60	420	145	215	15

**PERFORMANCE PARAMETER**

MODEL	MOTOR (kW)	Q(m³/h)	H (m)						
			0.5	1.0	1.5	2.0	2.5	3.0	3.5
CHL2-20	0.37	H (m)	19	18	16.5	15	13	10	7.5
CHL2-30	0.37		28	26.5	24.5	22	19	15.5	12
CHL2-40	0.55		36	34.5	33	29	25	20.5	16
CHL2-50	0.55		45.5	43	40	36	31.5	26.5	20.5
CHL2-60	0.75		53.5	51	48	44	39	32	24

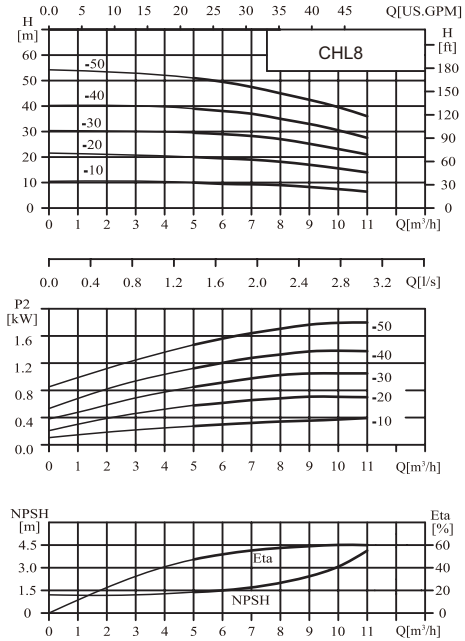
**PERFORMANCE CURVE**

**INSTALLATION DIMENSION DRAWING**

**SIZE AND WEIGHT**

MODEL	SIZE (mm)			WEIGHT (kg)
	L	D	H	
CHL4-20	400	145	215	13
CHL4-30	400	145	215	13
CHL4-40	420	145	215	15

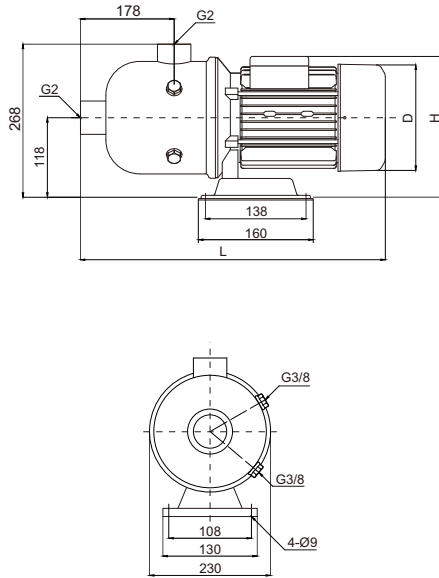
**PERFORMANCE PARAMETER**

MODEL	MOTOR (kW)	Q(m³/h)	H (m)						
			1	2	3	4	5	6	7
CHL4-20	0.37	H (m)	19	18	17	15	12.5	10	8
CHL4-30	0.55		28	27	26	23.5	20.5	17	13
CHL4-40	0.75		37.5	36	34	31	27	23	19

PERFORMANCE CURVE



INSTALLATION DIMENSION DRAWING



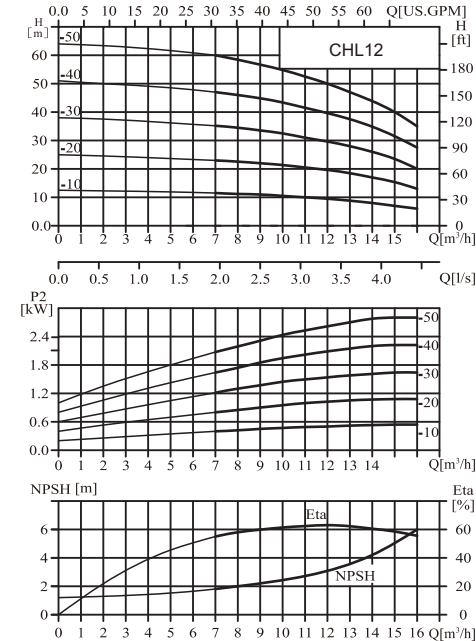
SIZE AND WEIGHT

MODEL	SIZE (mm)			WEIGHT (kg)
	L	D	H	
CHL8-10	550	157	230	20
CHL8-20	550	157	230	20
CHL8-30	550	157	230	25
CHL8-40	570	175	240	25
CHL8-50	570	175	240	30

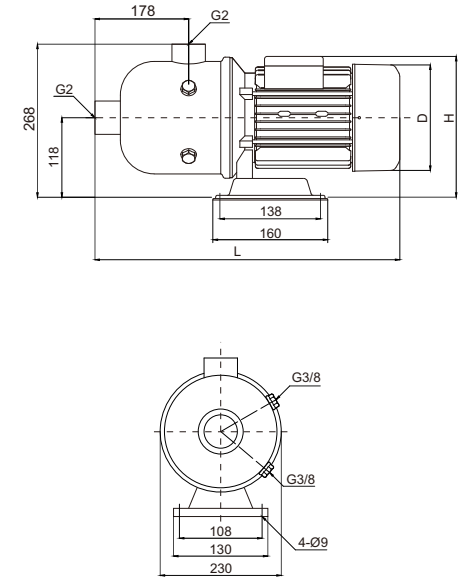
PERFORMANCE PARAMETER

MODEL	MOTOR (kW)	Q(m³/h)	H (m)						
			5	6	7	8	9	10	11
CHL8-10	0.75		10	9.5	9.3	9	8	7.5	7
CHL8-20	0.75		20	19.5	19	18	17	15.5	14
CHL8-30	1.1		29.5	29	28	27	28	23	21
CHL8-40	1.5		39	38	37	35	33	30.5	27.5
CHL8-50	2.2		51	49.5	47.5	45	42.5	39.5	36

PERFORMANCE CURVE



INSTALLATION DIMENSION DRAWING



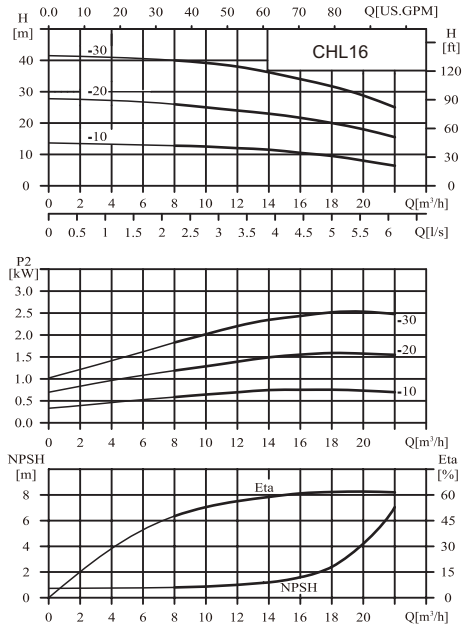
SIZE AND WEIGHT

MODEL	SIZE (mm)			WEIGHT (kg)
	L	D	H	
CHL12-10	550	157	230	20
CHL12-20	550	157	230	20
CHL12-30	570	175	240	25
CHL12-40	570	175	240	30
CHL12-50	600	190	270	34

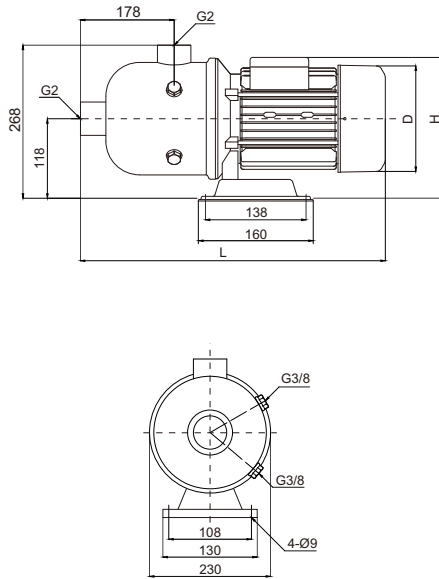
PERFORMANCE PARAMETER

MODEL	MOTOR (kW)	Q(m³/h)	H (m)									
			7	8	9	10	11	12	13	14	15	16
CHL12-10	0.75		11.5	11.2	11	10.5	10	9.5	9	8	7	6
CHL12-20	1.1		23	22.5	22	21.5	20.5	19.5	18.5	17	15.5	13
CHL12-30	1.8		35	34.5	33.5	32.5	31	29.5	28	26	23.5	20
CHL12-40	2.4		47	46	45	43.5	41.5	39.5	37.5	35	31.5	27.5
CHL12-50	3		60	58	56.5	55	52.5	50	47	44	40	35

PERFORMANCE CURVE



INSTALLATION DIMENSION DRAWING



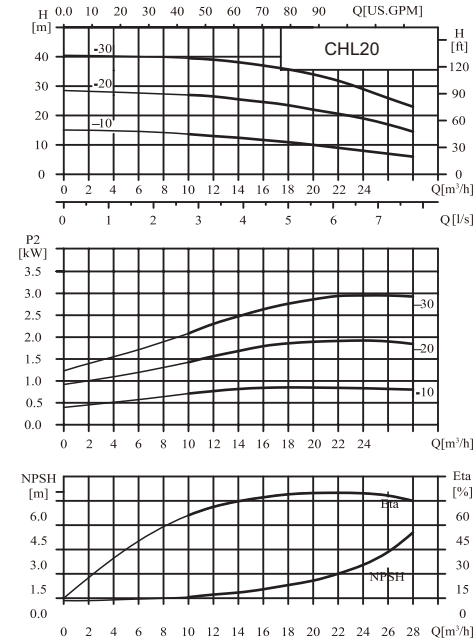
SIZE AND WEIGHT

MODEL	SIZE (mm)			WEIGHT (kg)
	L	D	H	
CHL16-10	550	157	230	20
CHL16-20	570	175	240	27
CHL16-30	600	190	270	34

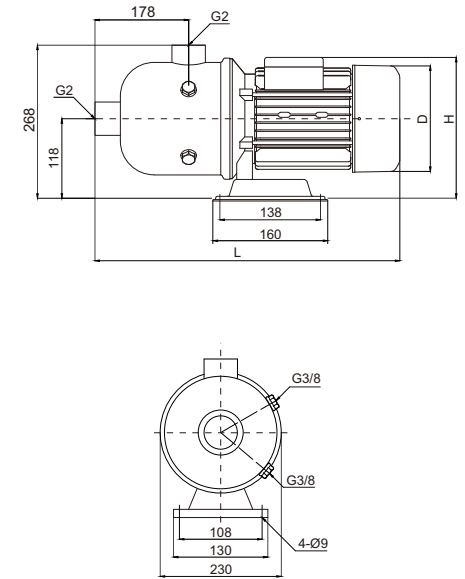
PERFORMANCE PARAMETER

MODEL	MOTOR (kW)	Q(m³/h)	H (m)							
			8	10	12	14	16	18	20	20
CHL16-10	1.1	H (m)	12.5	12.5	12	11.5	10.5	9.5	8	7
CHL16-20	2.2		25.5	25	24	23	21.7	20	18	15.5
CHL16-30	3		38.5	39	38	36	34	31.5	29	25

PERFORMANCE CURVE



INSTALLATION DIMENSION DRAWING



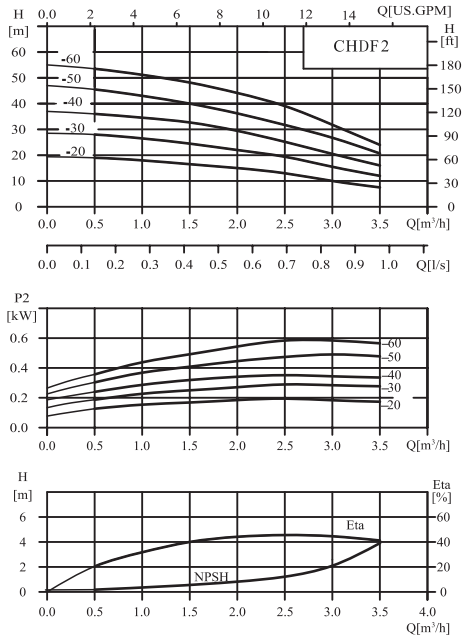
SIZE AND WEIGHT

MODEL	SIZE (mm)			WEIGHT (kg)
	L	D	H	
CHL20-10	550	157	230	21
CHL20-20	570	175	240	28
CHL20-30	600	215	270	42

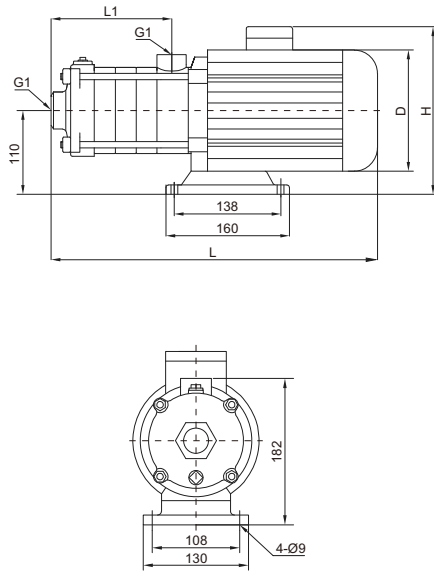
PERFORMANCE PARAMETER

MODEL	MOTOR (kW)	Q(m³/h)	H (m)									
			10	12	14	16	18	20	22	24	26	28
CHL20-10	1.1	H (m)	13.5	13	12.5	12	11	10	9	8	7	6
CHL20-20	2.2		27	26.5	25.5	25	23.5	22	20.5	18.5	17	14.5
CHL20-30	4		39.5	39	38	37.5	35.5	34	31.5	29	26	23

PERFORMANCE CURVE



INSTALLATION DIMENSION DRAWING



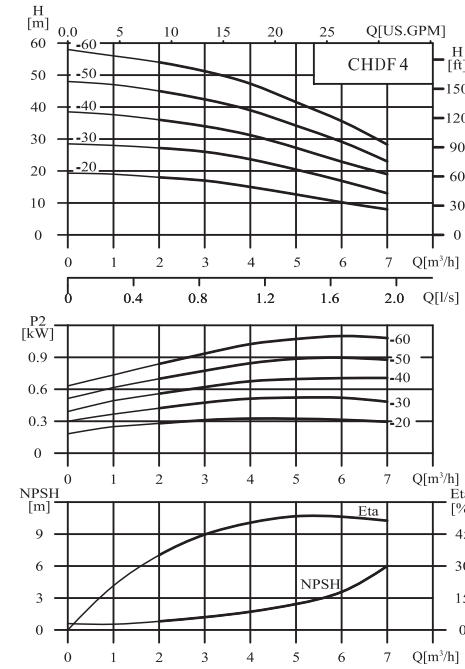
SIZE AND WEIGHT

MODEL	SIZE (mm)				WEIGHT (kg)
	L	L1	D	H	
CHDF2-20	305	84	145	215	15
CHDF2-30	323	102	145	215	15
CHDF2-40	341	120	145	215	15
CHDF2-50	359	138	145	215	15
CHDF2-60	397	156	145	215	17

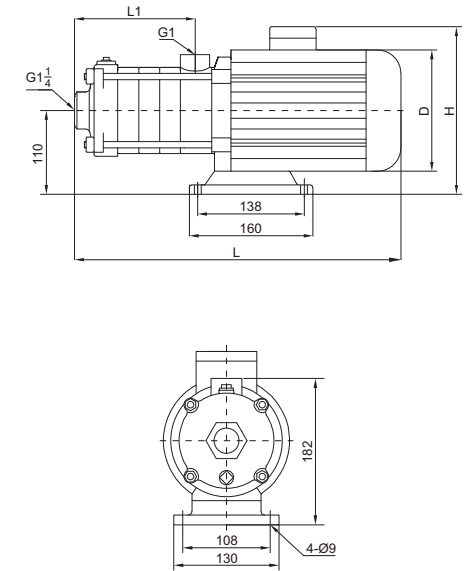
PERFORMANCE PARAMETER

MODEL	MOTOR (kW)	Q(m³/h)	H (m)						
			0.5	1.0	1.5	2.0	2.5	3.0	3.5
CHDF2-20	0.37	H (m)	19	18	16.5	15	13	10	7.5
CHDF2-30	0.37		28	26.5	24.5	22	19	15.5	12
CHDF2-40	0.55		36	34.5	33	29	25	20.5	16
CHDF2-50	0.55		45.5	43	40	36	31.5	26.5	20.5
CHDF2-60	0.75		53.5	51	48	44	39	32	24

PERFORMANCE CURVE



INSTALLATION DIMENSION DRAWING



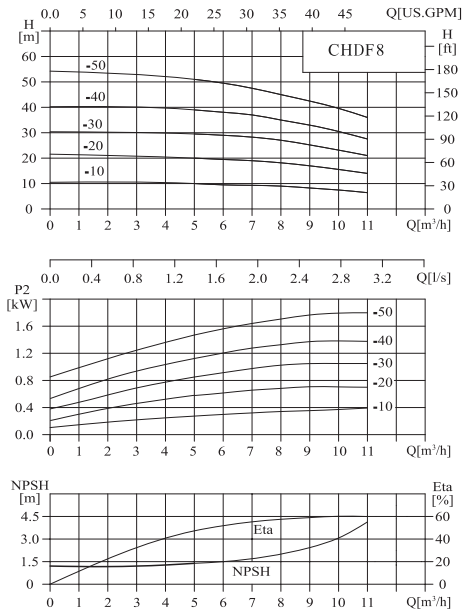
SIZE AND WEIGHT

MODEL	SIZE (mm)				WEIGHT (kg)
	L	L1	D	H	
CHDF4-20	329	102	145	215	15
CHDF4-30	356	129	145	215	15
CHDF4-40	416	156	145	215	17
CHDF4-50	455	183	145	215	17
CHDF4-60	482	210	145	215	17

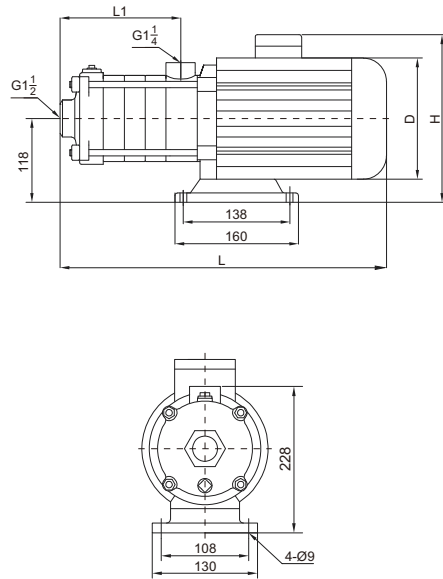
PERFORMANCE PARAMETER

MODEL	MOTOR (kW)	Q(m³/h)	H (m)						
			1	2	3	4	5	6	7
CHDF4-20	0.37	H (m)	19	18	17	15	12.5	10	8
CHDF4-30	0.55		28	27	26	23.5	20.5	17	13
CHDF4-40	0.75		37.5	36	34	31	27	23	19
CHDF4-50	1.1		47	45	42.5	39	34	29	23
CHDF4-60	1.1		56	54	51	47	41.5	35.5	28

PERFORMANCE CURVE



INSTALLATION DIMENSION DRAWING



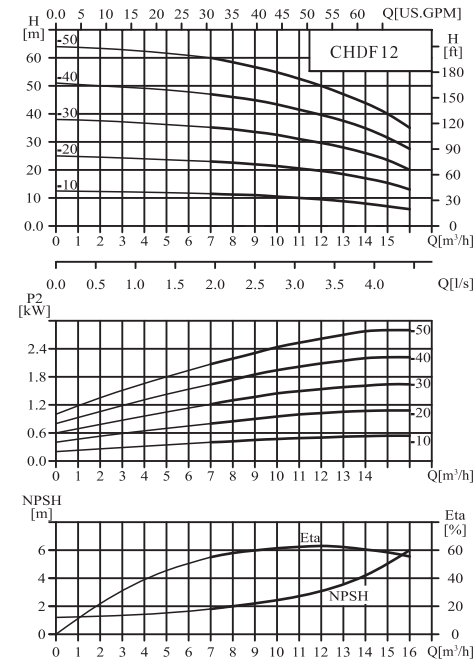
SIZE AND WEIGHT

MODEL	SIZE (mm)				WEIGHT (kg)
	L	L1	D	H	
CHDF8-10	395	108	157	230	20
CHDF8-20	395	108	157	230	20
CHDF8-30	425	138	157	230	25
CHDF8-40	490	168	175	240	28
CHDF8-50	520	198	175	240	30

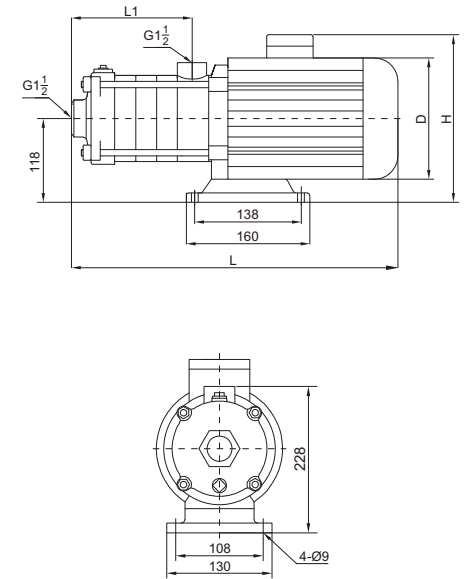
PERFORMANCE PARAMETER

MODEL	MOTOR (kW)	Q(m³/h)	H (m)						
			5	6	7	8	9	10	11
CHDF8-10	0.75	H (m)	10	9.5	9.3	9	8	7.5	7
CHDF8-20	0.75		20	19.5	19	18	17	15.5	14
CHDF8-30	1.1		29.5	29	28	27	28	23	21
CHDF8-40	1.5		39	38	37	35	33	30.5	27.5
CHDF8-50	2.2		51	49.5	47.5	45	42.5	39.5	36

PERFORMANCE CURVE



INSTALLATION DIMENSION DRAWING



SIZE AND WEIGHT

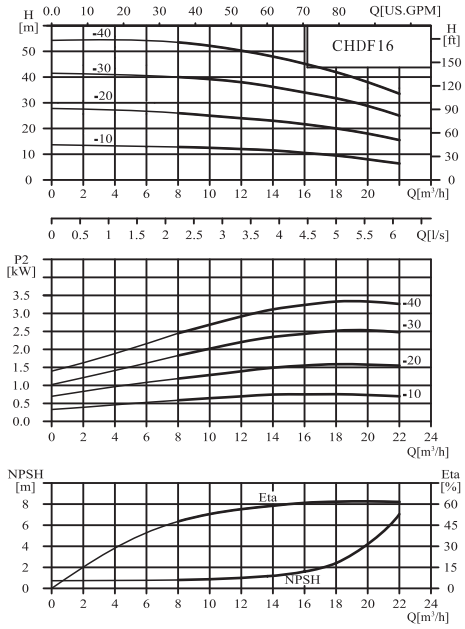
MODEL	SIZE (mm)				WEIGHT (kg)
	L	L1	D	H	
CHDF12-10	395	108	157	230	20
CHDF12-20	395	108	157	230	21
CHDF12-30	460	138	175	240	25
CHDF12-40	490	168	175	240	29
CHDF12-50	555	198	190	270	34

PERFORMANCE PARAMETER

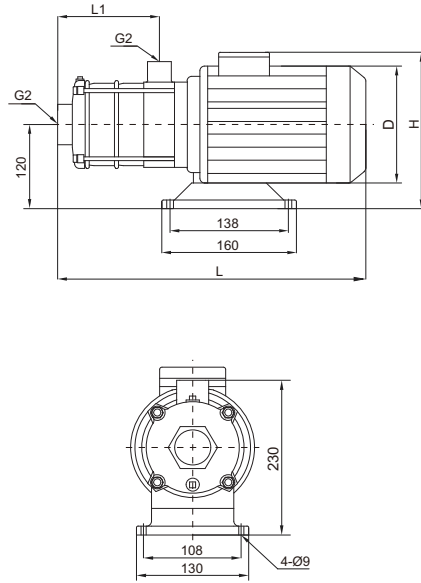
MODEL	MOTOR (kW)	Q(m³/h)	H (m)									
			7	8	9	10	11	12	13	14	15	16
CHDF12-10	0.75	H (m)	11.5	11.2	11	10.5	10	9.5	9	8	7	6
CHDF12-20	1.1		23	22.5	22	21.5	20.5	19.5	18.5	17	15.5	13
CHDF12-30	1.8		35	34.5	33.5	32.5	31	29.5	28	26	23.5	20
CHDF12-40	2.4		47	46	45	43.5	41.5	39.5	37.5	35	31.5	27.5
CHDF12-50	3		60	58	56.5	55	52.5	50	47	44	40	35



PERFORMANCE CURVE



INSTALLATION DIMENSION DRAWING



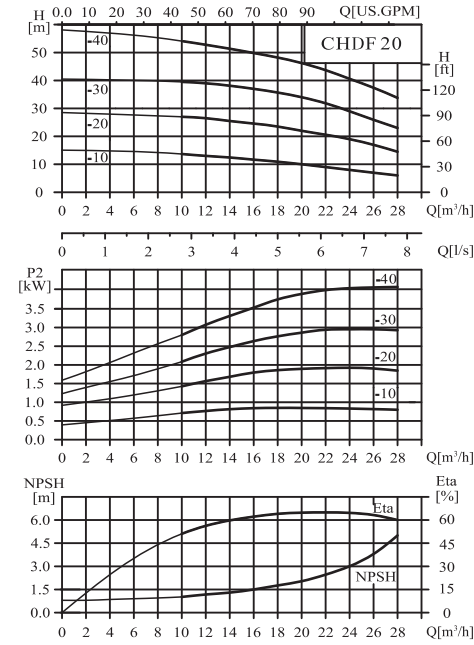
SIZE AND WEIGHT

MODEL	SIZE (mm)				WEIGHT (kg)
	L	L1	D	H	
CHDF16-10	423	126	157	230	17.5
CHDF16-20	455	126	175	230	27
CHDF16-30	561	171	190	270	33
CHDF16-40	621	216	210	270	41

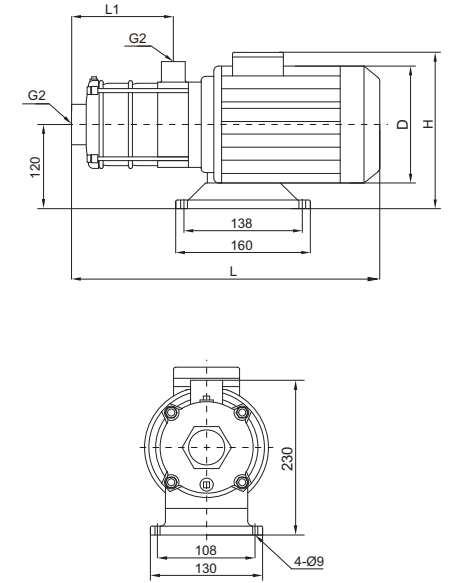
PERFORMANCE PARAMETER

MODEL	MOTOR (kW)	Q(m³/h)	H (m)							
			8	10	12	14	16	18	20	22
CHDF16-10	1.1	H (m)	12.8	12.5	12	11.5	10.5	9.5	8	7
CHDF16-20	2.2		26	25	24	23	21.7	20	18	15.5
CHDF16-30	3		40	39	38	36	34	31.5	29	25
CHDF16-40	4		53.5	52	50	48	45	42	38	33.5

PERFORMANCE CURVE



INSTALLATION DIMENSION DRAWING



SIZE AND WEIGHT

MODEL	SIZE (mm)				WEIGHT (kg)
	L	L1	D	H	
CHDF20-10	423	126	157	230	17
CHDF20-20	455	126	175	230	27
CHDF20-30	576	171	210	270	41
CHDF20-40	621	216	210	270	44

PERFORMANCE PARAMETER

MODEL	MOTOR (kW)	Q(m³/h)	H (m)										
			10	12	14	16	18	20	22	24	26	28	
CHDF20-10	1.1	H (m)	13.5	13	12.5	12	11	10	9	8	7	6	
CHDF20-20	2.2		27	26.5	25.5	25	23.5	22	20.5	18.5	17	14.5	
CHDF20-30	4		39.5	39	38	37.5	35.5	34	31.5	29	26	23	
CHDF20-40	4.4		53	52	51	50	48.5	46.5	43	40	36	32.5	